

# Showcase Locks

The Medeco® high security showcase lock is specifically designed for installation on sliding cabinet door applications that require extra protection beyond what ordinary showcase locks provide. Complete with a solid steel locking bar and anti-spread housing, the Medeco showcase lock is ideal for securing showcases and cabinets where two sliding surfaces are to be locked. No other lock can be compared with Medeco's proven track record of security and long term reliability. Patented key programs prevent the unauthorized duplication of keys and maintain system integrity. Keyed alike, keyed different, or master keyed, the Medeco showcase lock is the perfect solution for your showcase security needs.



The Medeco<sup>3</sup> unique design provides triple locking action, making the locks virtually pick proof. All Medeco<sup>3</sup> keys and locks are protected under patent, trademark, and copyright laws. Medeco<sup>3</sup> keys may only be duplicated by Medeco or by an authorized Medeco Service Center, and only at your request.

## Benefits:

- ▼ Solid machined brass plug, high density zinc die cast housing, and nickel plated steel locking bar
- ▼ Unique elevating and rotating tumbler pin system is virtually pick proof.
- ▼ Patented Medeco<sup>3</sup> keys may only be duplicated by Medeco or authorized Medeco Service Center, and only at your request.
- ▼ Medeco locks are completely serviceable, and can be re-keyed in case of lost or stolen keys
- ▼ Medeco locks can be keyed in with other 60 series products (10 series products may be keyed into existing 60 series systems)
- ▼ Locks can be keyed alike, keyed different, or master keyed depending on your specific needs.

## Applications:

Medeco high security showcase locks are specifically designed to secure showcase or cabinets where two sliding doors need to be secured, including:

- Jewelry and Electronics Showcases
- Drug and Medical Cabinets
- Laboratory
- Furniture
- Office Credenzas

## Warranty:

Warranted for two years against manufacturer's defects. See Medeco limited Warranty for full details.

## Technical Information:

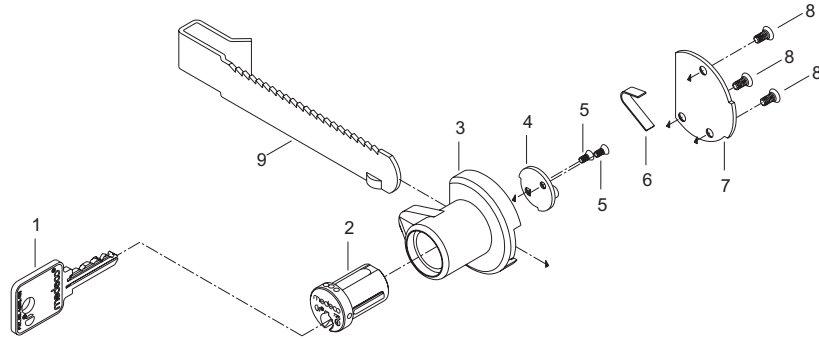
Four pin key retaining cylinder is standard. Self-locking latch, 90° counterclockwise rotation to unlock. Keyed alike, keyed different, or master keying available.

## Finishes:

26 Satin chrome finish standard. Other finishes available, depending on volume.

# Exploded View

## SHOWCASE LOCK



ITEM	DESCRIPTION
1	Key
2	Plug Assembly
3	Housing
4	Actuator
5	2-56 Actuator Screw
6	Spring
7	Cover Plate
8	4-40 Assembly Screw
9	Locking Bar

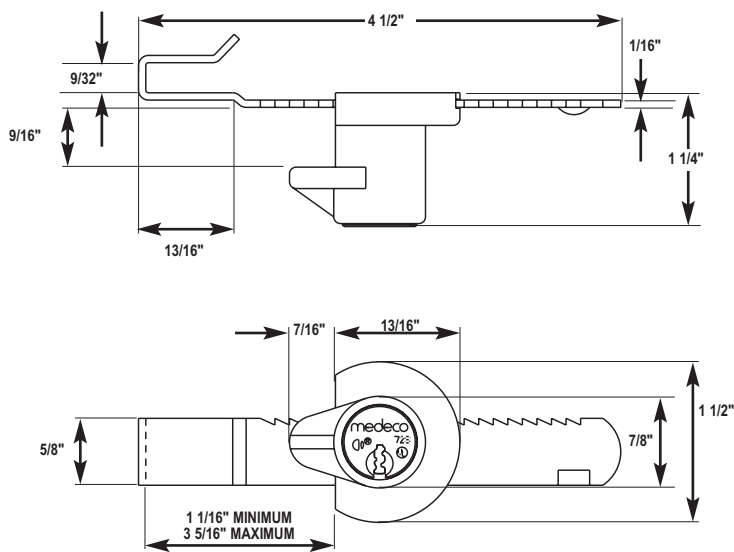
# Technical Drawings

**Specifications:** Medeco® self-locking ratchet lock is designed for installation on sliding cabinet doors measuring up to 1/4" in thickness. Complete with anti-spread housing, these locks are the perfect solution for securing showcases, jewelry cabinets, medical/laboratory furniture, office credenzas, etc... Medeco ratchet locks are completely serviceable and can be re-keyed to new codes as required.

**Material:** Plug constructed from half hard brass, zinc die cast housing, chrome plated finish (US626) is standard. Locking bar is nickel-plated steel.

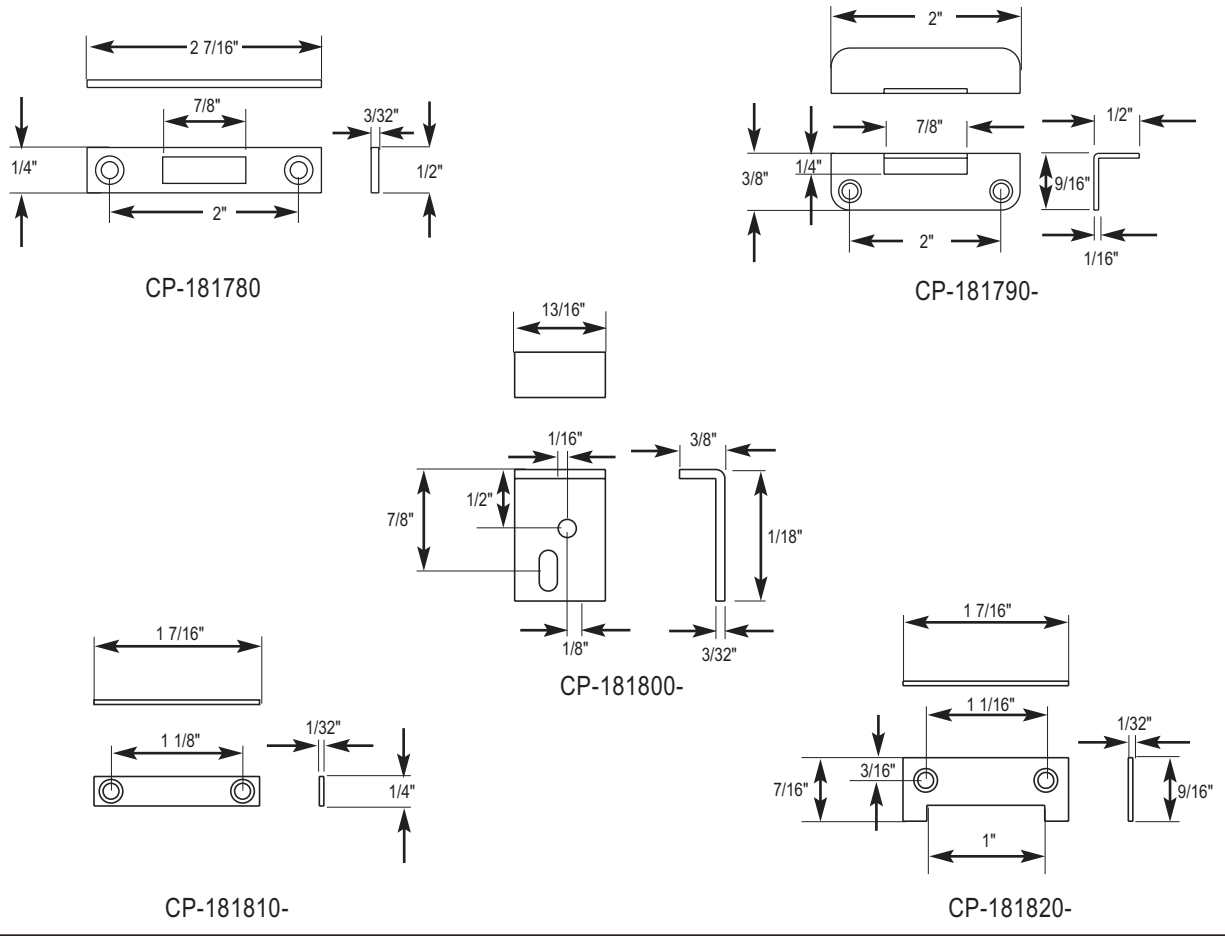
**Operation:** Four pin, key retaining cylinder is standard. 90° counterclockwise rotation to unlock.

## DIMENSIONS



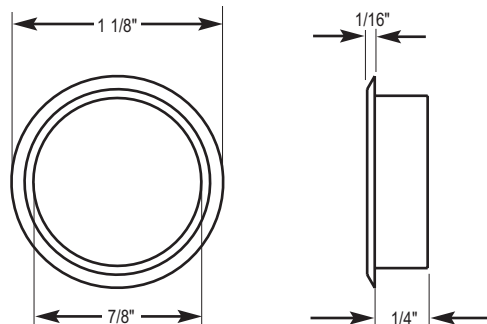
# Medeco Cabinet Lock Accessories

## STRIKES



All strike plates are made of nickel plated steel

## ESCUTCHEON RING



CP-181830-

Escutcheon ring is chrome plated brass