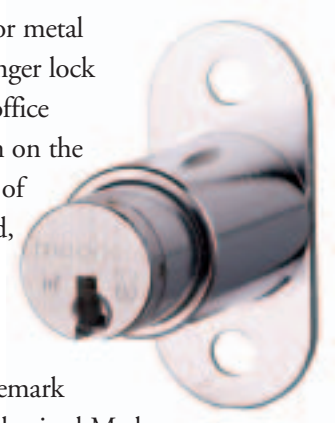


Plunger Locks

Medeco high security plunger locks are specifically designed for use in wooden or metal sliding doors. Complete with a spring loaded pop out cylinder, the Medeco plunger lock is ideal for security merchandise showcases, metal cabinets, and laboratory and office furniture. Plunger locks require no key when locking the device; simply push in on the cylinder to relock. Patented key programs prevent the unauthorized duplication of keys and maintain system integrity. Keyed alike, keyed different, or master keyed, the Medeco plunger lock is the perfect solution for your security needs.

The Medeco³ unique design provides triple locking action, making the locks virtually pickproof. All Medeco³ keys and locks are protected under patent trademark and copyright laws. Medeco³ keys may only be duplicated by Medeco or an authorized Medeco Service Center, and only at your request.



Benefits:

- ▼ Medeco high security plunger locks are constructed of durable machined brass and solid steel components.
- ▼ Unique elevating and rotating tumbler pin system is virtually pick proof.
- ▼ Patented Medeco³ keys may only be duplicated by Medeco or an authorized Medeco Service Center, and only at your request.
- ▼ Medeco cabinet locks are completely serviceable, and can be re-keyed in case of lost or stolen keys
- ▼ Medeco cabinet locks can be keyed in with other 60 series products (10 series products may be keyed into existing 60 series systems)
- ▼ Locks can be keyed alike, keyed different, or master keyed depending on your specific needs.

Applications:

Medeco high security cabinet locks are specifically designed for use in metal or wooden sliding door applications including jewelry and other merchandise showcases, metal cabinets, laboratory and office furniture.

Certification:

Lock - UL® 437 Listed

Warranty:

Warranted for two years against manufacturer's defects. See Medeco limited Warranty for full details.

Technical Information:

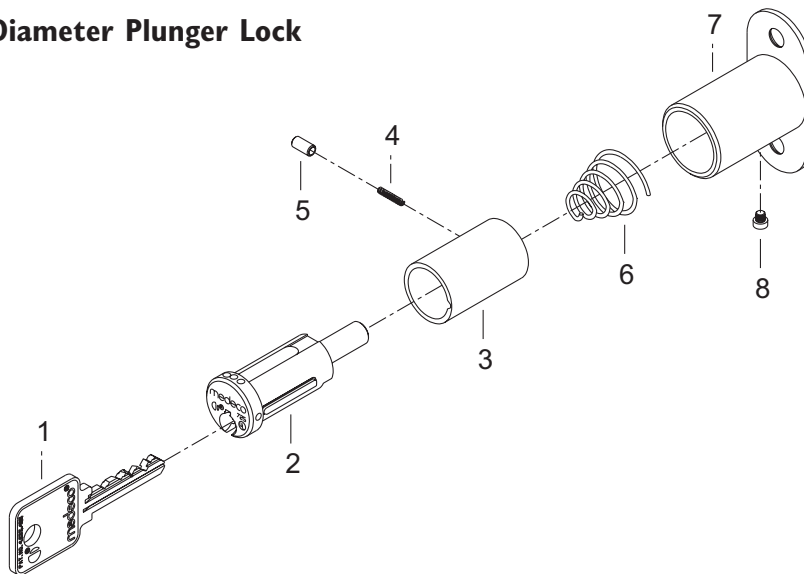
Four and five pin models available. Non-key retaining cylinders. 45 degree clockwise rotation to unlock.

Finishes:

26 Satin chrome finish standard.

1 5/16" Diameter Plunger Lock

5 Pin, 1 5/16" Diameter Plunger Lock



ITEM	DESCRIPTION
1	Key (Sold Separately)
2	Plug Assembly
3	Shell
4	Bolt Spring
5	Bolt
6	Plunger Spring
7	Housing
8	3-56 Screw

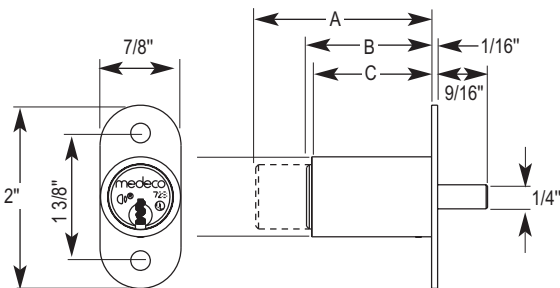
Specifications: Medeco plunger locks feature a spring loaded “pop-style” cylinder, specifically designed for use in wood- en or metal sliding doors. Locking is accomplished by pushing on cylinder, extending plunger through back of housing, until bolt engages in latched position, no key required to lock. Typical applications include jewelry and other merchan- dise showcases, metal cabinets, laboratory and office furniture. Medeco plunger locks are completely serviceable, and can be re-keyed to new codes as required.

Material: Plug (including plunger) and shell made from chrome plated (626 finish) half hard brass. Bolt is nickel plated brass. Housing constructed from brass barrel and steel mounting plate, chrome (626) finish.

Operation: Four and five pin models available. Non-key retaining cylinders. 45 degree clockwise rotation to unlock.

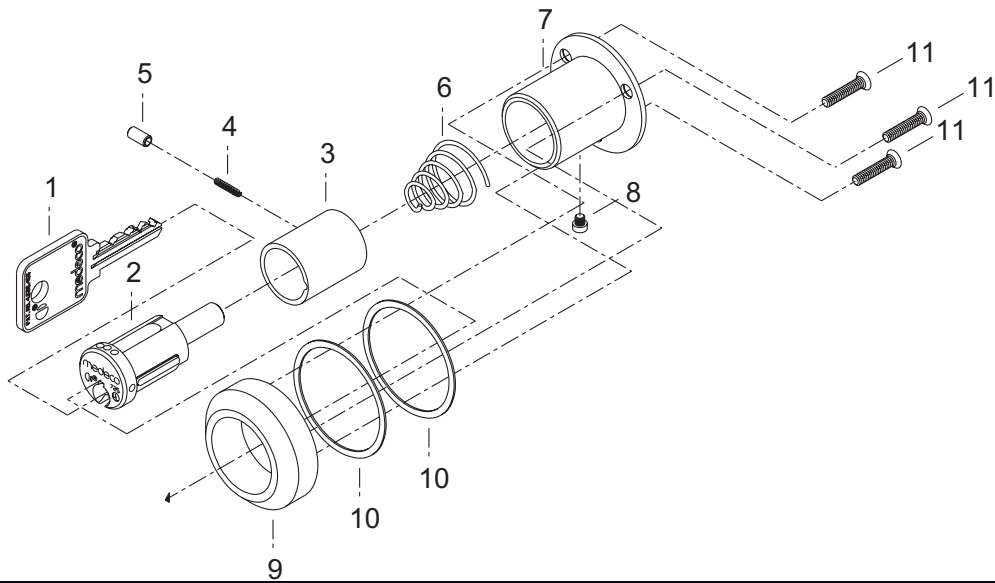
1 5/16" Diameter Plunger Lock Dimensions:

Part Number	# of Pins	A	B	C
62X21553X-	4	1	1 1/16"	1 5/8"
62X21555X	5	1 5/16"	1 3/8"	1 7/8"



Technical Drawings

1 5/16" Diameter Glass Mount Plunger Lock



ITEM	DESCRIPTION
1	Key (Sold Separately)
2	Plug Assembly
3	Shell
4	Bolt Spring
5	Bolt
6	Plunger Spring
7	Housing
8	3-56 Screw
9	Collar
10	Washer
11	4-40 Screw x 9/16

Specifications: Medeco glass mount plunger locks feature a spring loaded “pop-style” cylinder, specifically designed for use in glass sliding doors, 1/16” to 3/8” thick (with screws provided.) Locking is accomplished by pushing on cylinder, extending plunger through back of housing, until bolt engages in latched position, no key required to lock. Typical applications include jewelry and other merchandise showcases, metal cabinets, laboratory and office furniture. Medeco plunger locks are completely serviceable, and can be re-keyed to new codes as required.

Material: Plug (including plunger), shell and collar made from chrome plated (626 finish) half hard brass. Bolt is nickel plated brass. Housing constructed from brass barrel and steel mounting plate, chrome (626 finish.)

Operation: Four pin model available. Non-key retaining cylinder. 45 degree clockwise rotation to unlock.

Dimensions:

